

# Syn2Clone™ CUSTOM CONSTRUCT SERVICE

SPEED UP YOUR SCIENCE WITH SBI'S HIGH-QUALITY CUSTOM SERVICES

SYSTEMBIO.COM/SYN2CLONE

## HIGHLIGHTS

- **Simplify vector construction with pipette-free cloning**
- **Send us your sequence and we'll take care of synthesis and cloning**
- **Choose from any of SBI's well-validated and highly-regarded vectors**
- **Accomplish more with constructs delivered to your lab in as little as two weeks**
- **Enjoy consistent quality, confidentiality, and on-time delivery with all projects completed on-site in our Palo Alto, CA, facility**

## Recently completed projects

- Design, synthesis, and cloning of a complex miR precursor

PROJECT LENGTH: TWO WEEKS

- Design, synthesis, and cloning of a large ORF-reporter fusion, marker, and selection cassette as an ~8 kb single-piece insert

PROJECT LENGTH: 7-8 WEEKS

## A simpler, easier way to get the constructs you need

With SBI's highly affordable Syn2Clone service, you can order any of SBI's well-validated and highly published vectors with your gene-of-interest already in it. For little more than the cost of the empty vector, we will synthesize your gene-of-interest and clone it directly into the SBI vector of your choice, satisfaction guaranteed. Just send us your sequence and vector selection, and we'll take care of the rest. If you're not happy, contact us within thirty days of receiving your Syn2Clone construct and we'll give you 50% product credit.

## Choose from any of SBI's gene delivery platforms

### INTEGRATING VECTORS

Great for general gene or non-coding RNA functional studies and applications where heritable expression is desired.

#### Viral Systems

- **Lentivectors**  
High titer and reliable
  - RANDOM INTEGRATION
  - LIMITED INSERT SIZE
  - HIGH COPY NUMBER

#### Non-Viral Systems

- **PiggyBac™ Transposon**  
Easy, consistent transgenesis
  - RANDOM INTEGRATION
  - UNLIMITED INSERT SIZE
  - HIGH COPY NUMBER
- **PhiC31 Integrase System**  
One-step single-copy integration
  - SITE-SPECIFIC INTEGRATION
  - UNLIMITED INSERT SIZE
  - SINGLE COPY NUMBER

### NON-INTEGRATING SYSTEMS

Great for sensitive applications, such as gene therapy, that need to avoid potential host gene disruptions due to vector integration.

#### Viral Systems

- **AAV Vectors**  
Effective gene delivery without viral integration
  - LIMITED INSERT SIZE
  - HIGH COPY NUMBER

#### Non-Viral Systems

- **Enhanced Episomal Vectors**  
Easy episomal expression
  - UNLIMITED INSERT SIZE
  - HIGH COPY NUMBER
- **Minicircle Technology**  
Episomal expression free from foreign DNA
  - UNLIMITED INSERT SIZE
  - HIGH COPY NUMBER

Get constructs the easy way with Syn2Clone—request a quote by emailing [services@systembio.com](mailto:services@systembio.com)

# EXPRESS LENTIVIRAL PACKAGING SERVICE

SPEED UP YOUR SCIENCE WITH SBI'S HIGH-QUALITY CUSTOM SERVICES

SYSTEMBIO.COM/LENTIVIRAL-PACKAGING-SERVICE

## HIGHLIGHTS

- **Transduction-ready virus in as little as 10 days**
- **Highly experienced team delivers high-quality packaged virus**
- **Consistent and reliable titers delivered at or above specified titer levels**
- **Three different titer levels and flexible production scales**
- **Trusted OEM lentivirus manufacturer for large life science reagent companies**
- **Expert technical support, full confidentiality, and on-time delivery with all projects completed on-site in our Palo Alto, CA, facility**

## Save time and effort with SBI's Lentiviral Packaging Service

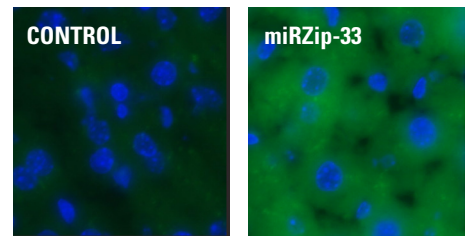
When you need to use a lentiviral system for gene delivery, SBI is here to help. Get ready-to-transduce, high-quality, high titer lentiviral preparations in as little as ten days, at the production scale your project needs—even at large scales of up to 10 ml. Use your own lentivector construct or take advantage of our Syn2Clone or Custom Construct services and we'll handle vector construction as well. We even have an ultra-high titer offering for demanding applications such as *in vivo* and stem cell transductions.

### Available titer options

Titer	IFU/ml	Applications
Regular Titer	$>10^7$	Standard cell culture models
High Titer	$>10^8$	More difficult to transduce cells ( <i>e.g.</i> suspension cells)
Ultra-high Titer	$>10^9$	Very difficult to transduce cells such as stem cells and primary cells; <i>in vivo</i> applications

### High efficiency transduction *in vivo*

DAPI and GFP imaging in livers of mice 6 days after infection with either control virus (left) or miRZip-33 virus (right). Rayner, KJ, et al. *miR-33 Contributes to the Regulation of Cholesterol Homeostasis*. *Science*. 2010 June 18. 328(5985):1570. Supporting Online Material.



## A trusted partner with over a decade of success

Why turn to SBI for lentiviral packaging? The answer is our experienced service, high-quality packaged virus, and expert support. We've been in the lentiviral packaging business for over a decade—far longer than many companies on the market—and are the trusted OEM partner for lentiviral packaging for several large life science reagent companies. Because all aspects of this service are completed on-site in our Palo Alto, CA, facility, we can offer complete confidentiality, transparency on project status, and fully-informed, expert technical support.